

# FREE 16-PAGE MINI-MAG

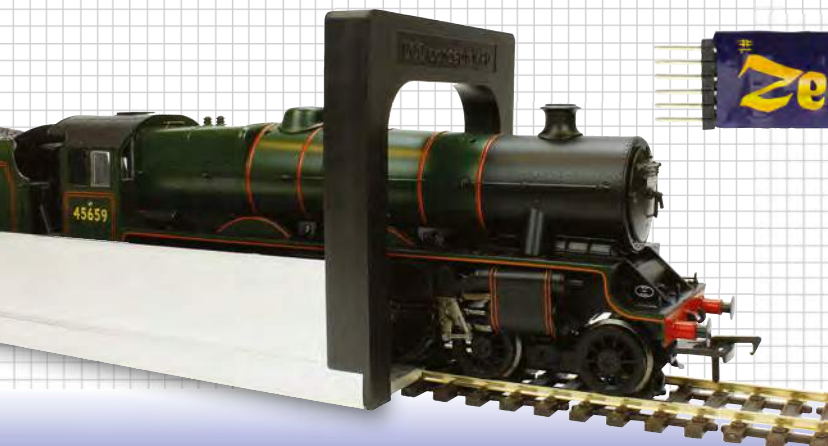
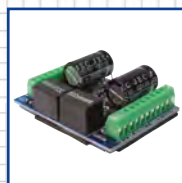
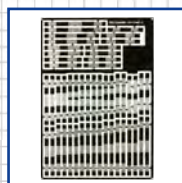
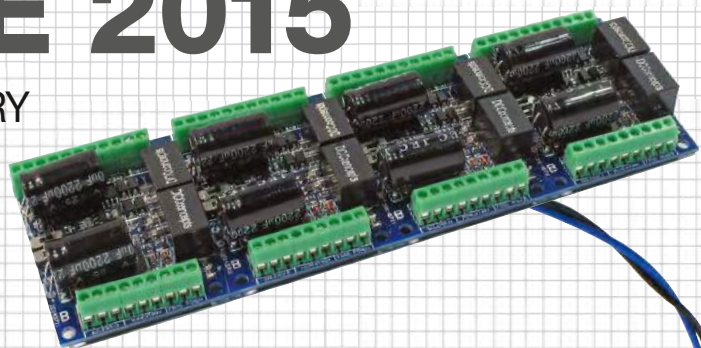
# DCC concepts

the best of everything

## NEW PRODUCTS GUIDE 2015

- ADS ACCESSORY DECODERS
- NEW COBALT POINT MOTORS
- ZEN DCC DECODERS
- UK TRACKWORK FRETS...

**...AND MORE!**



FREE WITH NOVEMBER 2014

**BRM**  
BRITISH RAILWAY MODELLING

DCCconcepts are proud to present **Zen** Decoders.

**Zen** is a new decoder range with a personality all its own. **Zen** features unique design, great performance and it has an "installability" that is something special.

Decoders are all too often designed by engineers to suit engineers... Lots of features that are never used, dozens of light options and functions that are just not needed, too many wires, just too big to fit easily...

The list goes on and on - and it became very clear to us as we talked to modellers around the world that some issues were ignored and that is a problem because all model trains are not the same at all.

Some prototypes, made to a smaller loading gauge than the USA and parts of Europe, give modellers a real headache when the time comes for them to choose and install a decoder.

We wondered... Why does nobody think about the end user?

So... we did. We ignored convention, looking across problems not at them. We looked at need not want... and we enjoyed doing it. The name we chose just seemed to match our approach so well...

**Zen** is a range of 7 totally new DCC decoder designs that include the worlds smallest direct plug decoder, a totally universal micro 6-pin, as versatile 21 + 8-pin plus the smallest "Big decoder" there is...

**Zen** Buddha has huge power handling but is small in size. It has 6 functions and a 3Amp motor drive, plus 3 different forms of protection.

**Zen** Decoders all have multiple installation options - so one decoder fits many loco types. The range has choices for every common scale too!

**Zen** Decoders are packed with an all-new Slim and very powerful Stay-Alive™ that is four times stronger and yet it is also both smaller and thinner than others for easy installation! (also sold separately in packs of 3)

We love **Zen**. We hope you do too!



**DCC** thinking outside the square  
**concepts**

By DCCconcepts

# Zen

Unique performance, real usability



Decoders that WILL fit every locomotive...

ZN218 has 8 pin and 21pin 21MTC ability.

ZN668 is 6P direct & also includes 6pin to 6 pin & 8 pin to 8pin harness for complete installation flexibility

**Zen 360 Direct**  
14.2 x 12.5 x 3.5mm

**Zen ZN6D**  
13.5 x 8.5 x 3mm

**Zen 218**  
22 x 16 x 4.5mm

**Zen ZN668**  
13.5 x 8.5 x 3mm

The Zen DCC decoder range and all other DCCconcepts products are distributed worldwide by DCCconcepts Pty Ltd. 3/13 Lionel Street, Naval Base WA 6165 Australia . Ph. 61 8 9437 2470 Fax. 61 8 9437 2471 www.dccconcepts.com DCCconcepts welcomes Retailer and Distributor enquiries. DCCconcepts products are distributed throughout the United Kingdom by Gaugemaster Controls Ltd., Ford Rd, Arundel Ph. +44 1903 884488 www.gaugemaster.com

# WELCOME...

## ...to your free



## mini-mag



It's not often that we encounter a supplier as prolific and as driven as DCCconcepts. Instead of sitting back & accepting the status quo, Richard Johnson and his team are constantly looking at ways of making our hobby more accessible, easier and more satisfying.

Through its range of high-quality, innovative and well thought through products, ranging from tools to complex electronics and weathering powders to fine-scale track, DCCconcepts keeps pushing the limits of what is available to the modeller, and what is achievable.

In this mini-magazine, you'll see a small part of the company's range, including some new and forthcoming items that further expand the company's reach – and improve on existing, widely-used products such as the Cobalt point motor.

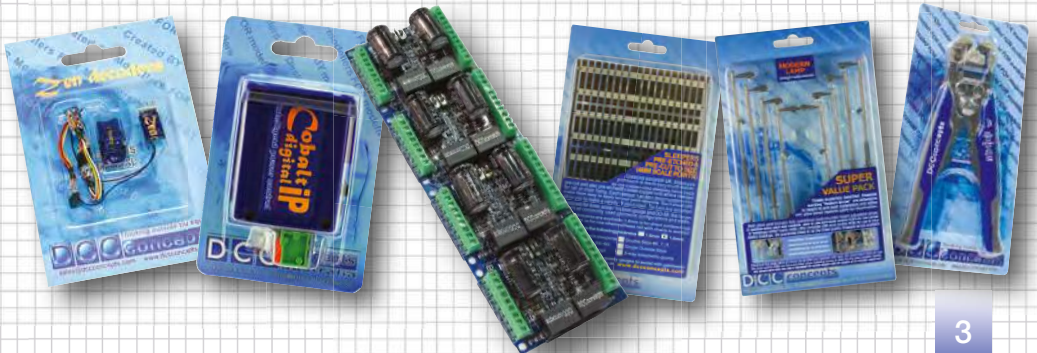
Whether you're using DC or DCC, the company has products that solve long-standing problems using clever technology, or just a bit of good old-fashioned nous. As a modeller himself,

Richard understands the problems we face, and has encountered the same problems we all have with outdated or inadequate products that no-one has ever thought to update or replace.

Over the last few years we've used a wide range of DCCconcepts products in various products and found them to be well-made and reliable. Even where the odd problem has been encountered, a lifetime warranty and the company's pro-active approach to customer service has proved to be very welcome.

There's plenty more in the pipeline too, and we'll bring you more on these developments in BRM over the coming months. Look out also for DCCconcepts products being used in a range of 'Practical BRM' articles in 2015.

**Ben Jones** Managing Editor



# ZEN Decoders offer incredible installation versatility!

ZEN – At DCCconcepts, ‘thinking outside the square’ is important when we try to create a product to make things easier for modellers, and in this case, the name just seemed to fit!

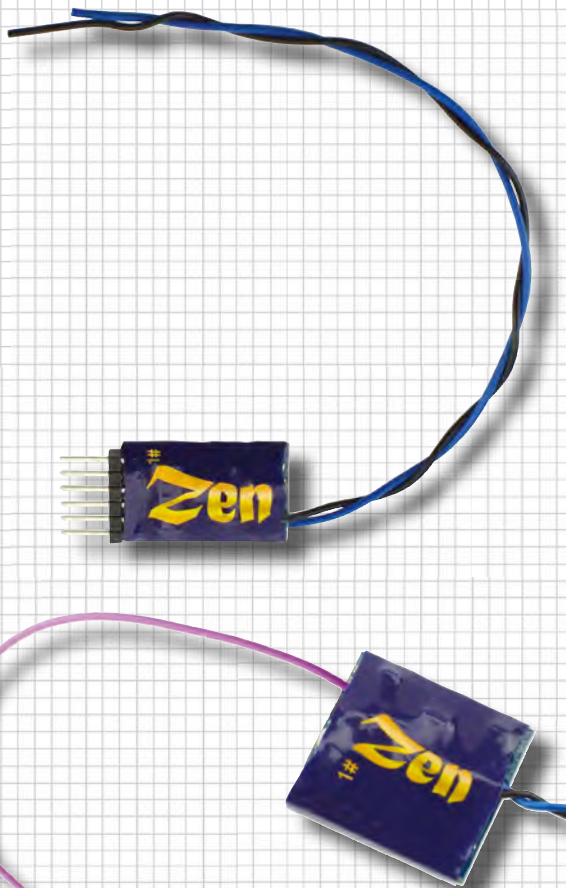
Our target? Simple; it’s not that hard to design a good decoder, but so much effort is often put into software that the practical approach can be lost when it comes to the physical design. We wanted to make decoders more installable and by doing that, make life easier for the modeller.

## We therefore took a different approach to the creation of our new range...

The name says it all; we ignored convention, looking across problems not at them. We looked at need not want, and we enjoyed doing it.

ZEN is a really good series of easily-installed decoders with great motor drive, versatile features and exceptional reliability. They offer more than enough power handling for all OO/HO and N scale locomotives and most importantly, they just fit.

ZEN offers truly excellent performance in a small package. Even the smallest of them is a ‘Big power’ decoder tough enough for smaller locomotives in the larger scales.




The ZEN range boasts the world’s smallest eight-pin direct decoder, and most are made small for easy installation - but The ZEN range also includes a large scale decoder affectionately known as ‘Buddha’ that has been purposely designed to offer exceptional value for O and Gauge 1 applications.

‘Buddha’ is tough – 3Amp continuous, 5Amp maximum. It features six active light functions and three-way protection PLUS a ‘Stay Alive’ function. We’ve kept the price tight though, so ‘Buddha’ is exceptional value.



Actual size of the ZN8D  
(15mm x 7mm)



Smaller than an 8-pin plug  
The ZEN Four function ZN8D  
is by far the world's smallest  
Direct-Plug DCC decoder!

### Meet the ZEN family

ZEN is a range of seven all-new designs, from the compact ZN6D and ZN6H six-pin decoders for N scale to the clever and very versatile ZN218 decoder that can be either 21-pin or eight-pin. ZEN also includes the ZN8D, the world's smallest eight-pin direct plug decoder and the tiny, super-slim ZN8H decoder for locomotives with almost no space at all, plus the universal ZN360 direct plug decoder.

For large scale models - the range includes the smallest 'Big decoder' there is – the 'Buddha' – protected in three different ways, equipped with six functions and ready to take on the heaviest of loads in 0 and Gauge 1 with its herculean motor drive.

Selected ZEN decoders may also include multiple harness options so one decoder will fit many locomotive types. There are also two new Stay-Alive™ units, each smaller and thinner than others out there, plus a variety of harnesses (sold separately) to help you install them in a variety of locomotives.

ZEN decoders are available singly or in economical five-packs to give you exceptional value. We really like ZEN. We hope you do too!

All ZEN decoders have default settings that deliver super-smooth loco drive and they have Back EMF that never needs adjusting. Most are four-function, so there are always enough light functions to do the job with if extra special effects and features are needed - enough to satisfy anyone.

Plus, as a bonus, every ZEN decoder also includes a high-quality yet compact Stay-Alive™. Most importantly, ZEN decoders are still very affordable.

# Cobalt Point Motors: Three Great Options

This year sees the introduction of three all-new Cobalt point motors, each with new features and exceptional performance.

While they are identical on the outside to the original Cobalts, every single aspect of this range is new. Revised case tooling allows new features and a redesigned drive train; new gearing to improve stability under extreme loads and reduced operating noise. New control electronics remove any drive voltage sensitivity and new feature additions make them even better value!

Incredibly easy to install, every Cobalt motor is now supplied pre-centred and ready-to-go, totally solder-free thanks to high quality spring-connections and complete right down to the mounting screws that you will need! We have even added to the accessories supplied with every motor and now include the self-adhesive mounting pad liked by so many Cobalt users - at no extra cost!

All Cobalt point motors carry a genuine lifetime warranty for the original purchaser, so they really will be the last point motors you ever need to buy!

## 1: Cobalt $\Omega$ (Omega)

Cobalt Omega replaces the original Cobalt Analogue motor. Even quieter than before, it adds a voltage range switch so it can be used with a wide variety of DC power supplies.

As well as the two high power single-pole, double-throw (SPDT) switches offered before, we have added a third switch linked to the power input terminals to give incredible wiring versatility and interconnection/interlocking ability. Quality is evident at every point - in fact the high power switch contacts are now - literally - gold plated for ultimate long-term contact reliability!

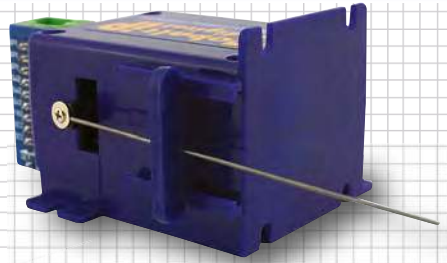
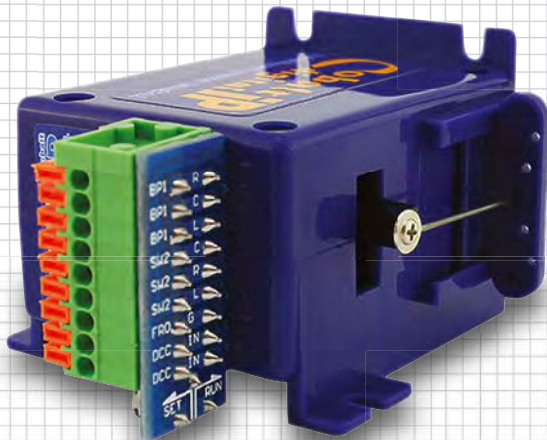


Adding Digital control is easy using the all-new AD-8fx or AD-2fx Accessory decoders. Supplied already centred and ready to go, with everything you need for installation, Cobalt Omega is a worthy successor to our original Cobalt Classic point motor.

## 2: Cobalt iP Analog

iP stands for Intelligent Power. We decided to add this second analogue version because customers often asked for a motor that was totally 'voltage free' yet had even lower power needs than the classic Cobalt Analogue range. Cobalt iP includes a sophisticated control circuit that draws almost no power (5mA) when static and only slightly more (40mA) when working.

Cobalt iP has three on-board SPDT switches, just like Cobalt Omega, and also adds simple 'swap direction' control with the flick of a built-in switch. It works on any DC voltage between 6V and 23V.



Like all Cobalt point motors, Cobalt iP Analogue is supplied ready-centred and complete with everything you need for installation. Adding Digital control is easy using the all-new AD-8fx or AD-2fx Accessory decoders.

### 3: Cobalt iP Digital

Cobalt iP Digital is something special!

With Cobalt 'Intelligent Power' plus an in-built Digital decoder it can be used for DCC operation including the option for simultaneous control panel switches. It can even be connected to a DC power source to give DC modellers a supremely easy to install and 'soldering-free' wired point motor with exceptional performance!

Cobalt iP Digital does not care what voltage your power supply or track bus is, and is happy at any voltage between 9V and 23V, AC, DC or DCC. Control can be either digital or via switches – or both at the same time. Manual control is via two simple momentary pushbutton switches.

Change direction can be swapped with a simple software command, and self-centering can be turned on and off with software commands too. Cobalt iP Digital has two in-built, high-power SPDT switches with gold plated contacts.

And, like all Cobalt motors, it is pre-centred, ready to install and supplied complete with everything you need for installation.



**Cobalt Point Motor Accessories**

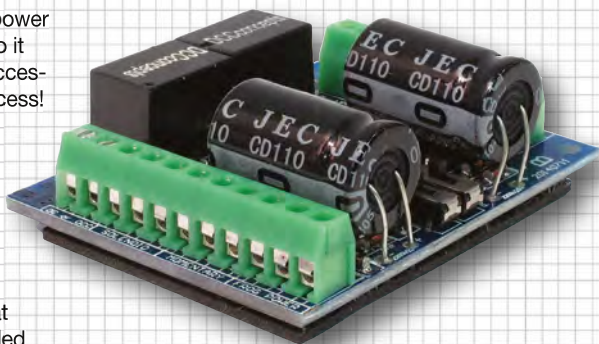
DCCconcepts offers a wide range of switch packs for use with Cobalt motors as well as other interesting accessories such as our 'ballast label' to make the installation and final detailing around the tie-bar easy – visit our new website - [www.dccconcepts.com](http://www.dccconcepts.com) - to see the full range.

# AD-Sfx Solenoid Decoder Range

Very few Accessory decoders can reliably power two Peco, SEEP or Hornby point motors, so it was no surprise that DCCconcepts' ADS accessory decoders were already a runaway success!

However, we are never satisfied until we reach our ideals, and the newly released AD-S8fx (eight-way) and AD-S2fx (two-way) accessory decoders do just that!

Building on the success of our ADS design that already allows any individual output to power both ends of a loop or a crossover, we have now added features that take away problems modellers have struggled with for more than 50 years!



frog power switching to change the polarity of live frog (electrofrog) pointwork and can even be used to provide feedback to a computer system.

## AD-S8fx and AD-S2fx are very versatile

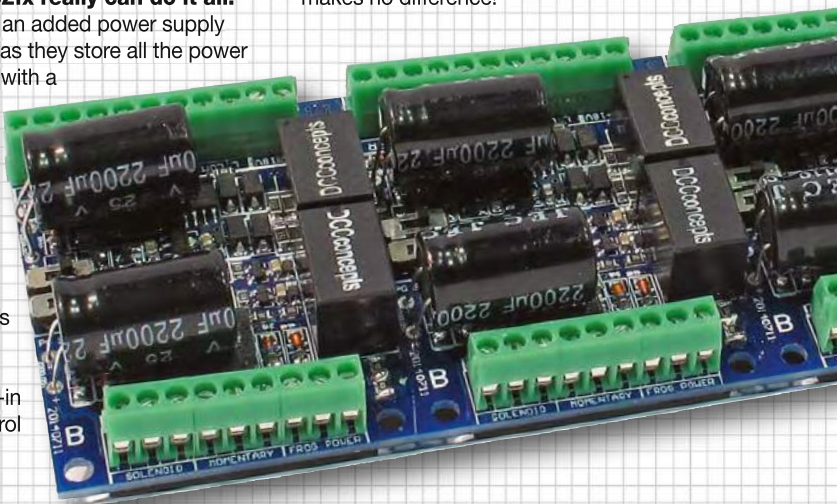
They are equally capable on DC or DCC controlled layouts and how you choose to control them is up to you - they are incredibly versatile. For DC control, use a 15-22v DC laptop or similar power supply.

You can of course address each of the outputs individually and operate with DCC. You can also have manual control just by adding two pushbutton switches, or if you prefer, use stud and probe, diode matrix or even trigger each output with a detector for basic automation - it makes no difference!

## AD-S8fx and AD-S2fx really can do it all!

There is no need for an added power supply when used for DCC as they store all the power they need on-board with a CDU built into every output. As a result they do not drain the track power when operating. Because of this, they also work beautifully with the fast-firing commands of computer control and route setting.

They include built-in LED control for control panels and signals,





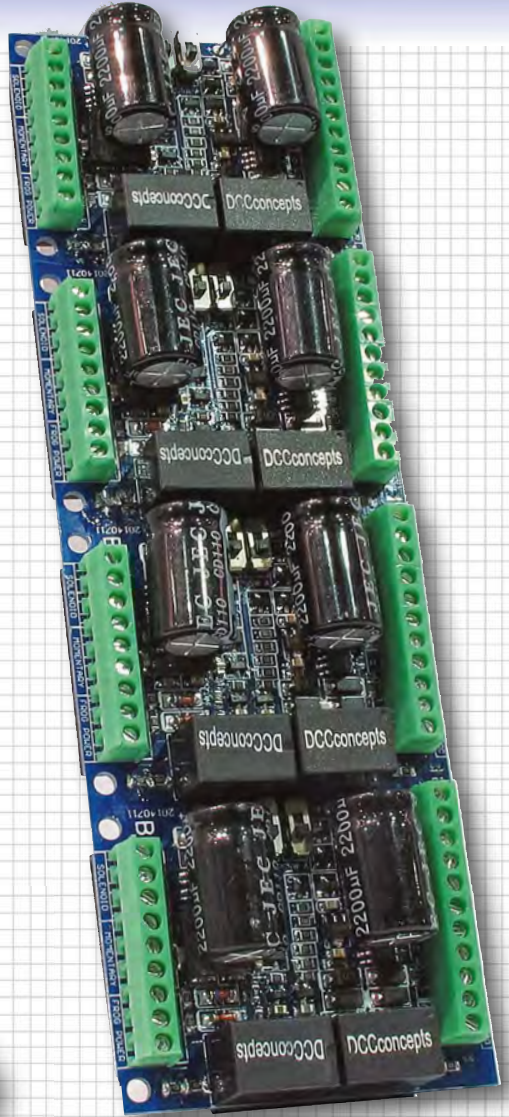
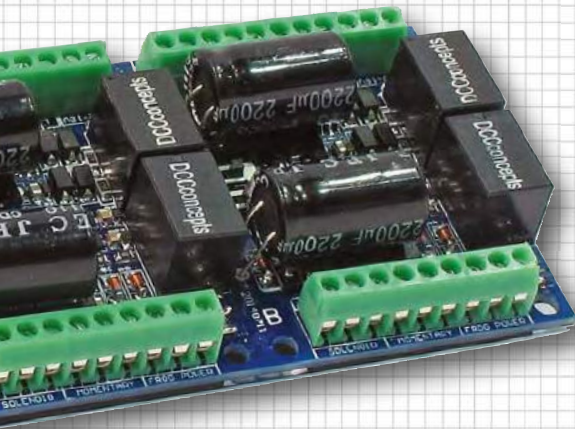
Wiring is simple too - most connections are via simple screw terminals and only the LED outputs panel require any attention from a soldering iron.

**Saving you time, frustration, effort and a LOT of money!**

If you have ever added micro-switches for frog and panel light control to a solenoid machine, along with all that extra wiring, then had to tweak the motor to get it working reliably because of the extra load you'll understand exactly what we mean here.

None of us wants the added stress of complex installation and DCCconcepts AD-Sfx series decoders make it so much simpler, easier and most importantly save you money at the same time, because there is simply NOTHING else to buy when you use them.

For example, a single AD-S8fx Solenoid decoder can power a whole 16-point double ended fiddle yard and, at the same time, it can power all of its live frogs and let you add control panel lights. Yet AD-S8fx itself costs only about two-thirds of the cost of the double micro-switches you would need to buy if you used ANY other accessory decoder! With a street price of under £70 for the AD-S8fx it really is exceptional value!



**Wiring tip**

Keep high-power connections balanced because small things can make a difference!

For example, when powering two solenoids off one output, make sure that the wires used to connect the AD-Sfx Decoder and each of the two solenoids are the same length.

That way, both solenoids will receive the same amount of power.

# Coming soon... Legacy Trackwork Frets



**SLEEPERS PRE-ETCHED & PRE-CUT TO SIZE (4MM SCALE POINTS)**

Creating accurate UK prototype pointwork is made very much easier as our copper-clad sleepers have been pre-cut and also pre-etched to leave copper only where needed for rail or chair fixing. Each sleeper has also been numbered to make them easy to apply to your point template. Each sheet will allow you to make a variety of point sizes. The bars are included. Designed for 4mm scale / 16.5mm gauge and OO-SF, the range covers all commonly used pointwork configurations and sizes. Two thicknesses are available: 1.6mm is for direct soldered rail and 1.0mm is for use when bullhead rail with chairs is wanted.

This pack has the following thicknesses:  1.6mm  1.0mm

<input type="checkbox"/> 80x Plain track sleepers	<input type="checkbox"/> Double Slips #6, 7, 8
<input type="checkbox"/> Pointwork A5, B8-B9	<input type="checkbox"/> Single Outside Slips
<input type="checkbox"/> Diamond Crossings	<input type="checkbox"/> 3-way asymmetric points

Free templates and top quality gauges to assist with pointwork construction are available at: [www.dccconcepts.com](http://www.dccconcepts.com)

**DCC** concepts

**SLEEPERS PRE-ETCHED & PRE-CUT TO SIZE (4MM SCALE POINTS)**

Creating accurate UK prototype pointwork is made very much easier as our copper-clad sleepers have been pre-cut and also pre-etched to leave copper only where needed for rail or chair fixing. Each sleeper has also been numbered to make them easy to apply to your point template. Each sheet will allow you to make a variety of point sizes. The bars are included. Designed for 4mm scale / 16.5mm gauge and OO-SF, the range covers all commonly used pointwork configurations and sizes. Two thicknesses are available: 1.6mm is for direct soldered rail and 1.0mm is for use when bullhead rail with chairs is wanted.

This pack has the following thicknesses:  1.6mm  1.0mm

<input type="checkbox"/> 80x Plain track sleepers	<input type="checkbox"/> Double Slips #6, 7, 8
<input type="checkbox"/> Pointwork A5, B8-B9	<input type="checkbox"/> Single Outside Slips
<input type="checkbox"/> Diamond Crossings	<input type="checkbox"/> 3-way asymmetric points

Free templates and top quality gauges to assist with pointwork construction are available at: [www.dccconcepts.com](http://www.dccconcepts.com)

**DCC** concepts

DCCconcepts is proud to be breaking new ground and doing something new in the area of hand-built trackwork. We are doing this as part of a project to make UK prototype trackwork more realistic than ever, and products in this range will be released under the 'Legacy' brand name.

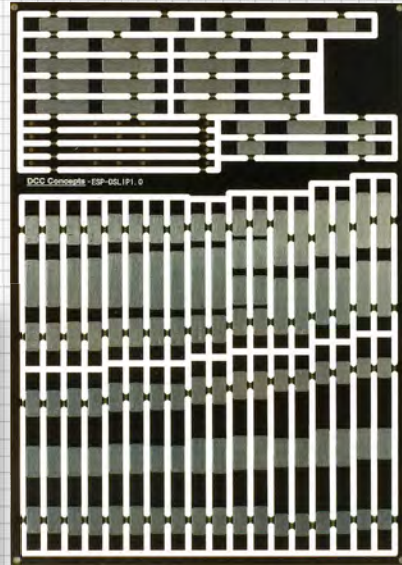
Starting with the best-ever range of track-making parts, this range will grow constantly from now. There are many exciting things to come, so keep your ear to the ground!

We have started the long journey to better track by offering a range of pre-etched and pre-cut sleeper frets for building UK prototype track and turnouts (pointwork) in 4mm scale to OO gauge

The range includes plain track, diamond crossings, outside slips, double slips, standard turnouts and three-way points. Initially released with sleeper sizes appropriate for 16.5mm and OO-SF use, we will soon add a second range for use in creating EM and P4 gauge track.

These top-quality fibreglass sleeper frets are versatile and easy to use. The turnout fret, for example, will provide the all of the sleepers needed for any turnout between an A5 and B9.

They're designed to take away all of the hard work of making track using copper-clad as they are ready to use - with pre-tinned copper pads ready to solder on your rails. So, with copper



“ All of our gauges are made using high-quality hard brass and they are machined using high-precision machinery to a tolerance of  $-0.00''$ ,  $+0.002''$  – no other track making gauge or related product available even comes close to this level of accuracy ”

pads ONLY where they need to be, you do not even need to worry about cutting the gaps. Being professionally cut and etched, they look so much better than hand-cut sleepers too!

We make the frets in two thicknesses – for standard track with directly soldered rail OR in a thin version for those using chairs to create proper UK bullhead track. DCCconcepts chairs will be coming soon....

Add the most accurate range of track-making gauges ever offered and you are ready to go. Why not have a try; you will be surprised what you can achieve.

All of our gauges are made using high-quality

hard brass and they are machined using high-precision machinery to a tolerance of  $-0.00''$ ,  $+0.002''$  – no other track making gauge or related product available comes even close to this level of accuracy.

Of course, templates are freely available and we can also help with good advice, and the perfect tools, solders and fluxes needed to complete the task.

PS – Our track-making parts and tools are very often useful and quite suitable for the creation of track in HO or for other gauges, scales and prototypes, so no matter what you enjoy modelling take a closer look.

# Quality lamps for every occasion

## Barley Twist Gas Lamps

As with all things, regional variations existed in gas lamps. These 'Barley Twist' type posts were initially installed in Southern England but the refined look was popular and they also spread further north over time, becoming part of many village landscapes.

The Barley Twist post was an extremely difficult thing to create, however we succeeded and the lamp is a beautiful model that is finely scaled with really delicate detail. The lamp surrounds are finely etched brass where others use plastic, and the post is cored with solid brass too so will always remain perfectly straight. As the images show, detail is accurate and exquisite, and really does pass the test of close examination.

As with all of our lamps, they are supplied with post extensions and light control PCBs. This lamp is available in both three-packs and a value pack containing six lamps plus two wall-mounted



bracket lamps. It is available in green, black, maroon and GWR light and dark stone.

We recommend a final voltage range of 3V to 5V for realistic light levels. The supplied light control PCBs will deliver this if you connect them correctly and you choose a regulated DC power wall-plug type power supply of between 6V and 12V.

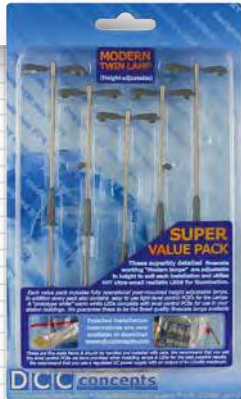
We have no hesitation in saying that our DCCconcepts lamp range is by far the best available!



“ The Barley Twist post was an extremely difficult thing to create, however we succeeded and the lamp is a beautiful model that is finely scaled with really delicate detail! ”



“ Lighting in these lamps uses high-intensity pure white NANO-LEDs to properly simulate the real thing! ”



### Modern Lamps

Efficiency starts to matter when larger areas need lighting, and modern lamp installations use various technologies to create light. Standard designs have emerged and spread widely over recent years.

The Phillips/Sylvania range of commercial lamp standards is one that has been widely adopted throughout the railway and road system for platforms, yards, car parks and streetscapes, so it was a natural choice when it came to creating a high quality model. We are very pleased with the result.

Both single and double head lamps are available, complete with a properly designed base and adjustable length stainless-steel posts. And we have even added speakers to some posts in each

pack as these are often found where this sort of lamp is installed.

We have made these lamps extremely fine so if you choose to paint them, please do so with an airbrush or spray can - lightly. Striping and colour bands are often found on these posts in the real world - we suggest you use striping decals or strips made for model cars as applying this sort of stripe with a super thin tape or transfer is far, far easier than painting it on!

Available in standard or value packs, every lamp is supplied with a light control PCB. As with the gas lamps, we suggest you start with a low voltage regulated DC wall plug, and set the light to a realistic level. Lighting in these lamps uses high intensity pure white NANO-LEDs to properly simulate the real thing!

# MPD Loco Storage



## Drive on, drive off...

Sometimes a great product sneaks onto the market and we forget to tell you about it! MPD has become a favourite of those who try it, but has rarely been seen in the mainstream model railway press before.

DCCconcepts MPD brings you a totally safe way to handle and store your precious locomotives. In fact, in most cases you may never need to handle them again, as their drive-on, drive-off capability lets you add locomotives to the layout easily while protecting fine details, weathering and delicate mechanisms. DCC sound users love MPD too, because locomotive and tender can stay permanently coupled.

Exhibiting modellers love MPD because it guarantees safe transport and for those with smaller layouts, it delivers the perfect cassette system. In fact, DCCconcepts MPD is absolutely the best and safest way to handle, store or transport your precious locomotives and stock. It is versatile gauge-wise too!

For modellers in HO, or British 4mm scale OO, your MPD is ready to use when you get it home.

EM and P4 modellers can easily reduce the fine 'rails' of the MPD by approximately 1mm each with a long straight mill-cut file to achieve the correct gauge.

Guide rails built into the extrusion under MPD are placed there mainly for you by the way - they

easily and firmly clip onto the outside of EM or P4 track with the help of a very slight flexing of the end caps, giving you a very stable platform.

MPD can even help you with locomotive servicing! The protective injection-moulded foam top is lined with velvet and capped with closed-cell foam inside to protect your locomotives and it makes the perfect servicing cradle.

Just drive your locomotive into MPD, add the protective top cap and then turn it upside down, and your model is ready for wheel-cleaning and oiling!

When you're finished, just add the MPD 'rail structure' back while it is still upside down, flip it upright again and it is ready to drive away once more!

For a great demonstration of how the DCCconcepts MPD works, take a look at this excellent YouTube video clip: <http://bit.ly/1mle99z>

“ **DCCconcepts MPD brings you a totally safe way to handle and store your precious locomotives** ”

TRACKPLANS TO SUIT EVERY MODEL RAILWAY BUILDER

THE **BRM** GUIDE TO...  
**TRACKPLANS**  
& **LAYOUT DESIGN**

DOWNLOAD  
YOUR COPY AS A

**BRM**  
BRITISH RAILWAY MODELING  
**DIGITAL EDITION**

FOR ONLY £3.99

For more information please visit  
[www.pocketmags.com/BRM](http://www.pocketmags.com/BRM)

**55+**  
LAYOUT PLANS

- ▶ INSPIRATIONAL PLANS  
IN N, OO AND O GAUGE
- ▶ FIND THE RIGHT HOME  
FOR YOUR LAYOUT
- ▶ PLAN AND DESIGN  
YOUR PERFECT RAILWAY

PLUS

**EXPERT  
LAYOUT DESIGN  
TIPS**

**ON  
SALE  
NOW!**

**ONLY £5.99**

Available from WHSmiths, leading model  
shops and [www.model-railways-live.co.uk](http://www.model-railways-live.co.uk)

# AD-S8fx

By DCCconcepts

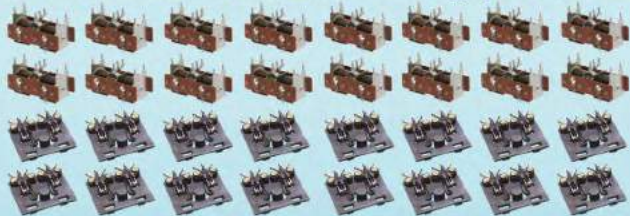
Unique performance, real usability

# Solenoid Accessory Decoder

Only live frog point-work (AKA Electro-frog) gives reliable running. But... if you want to add Hornby, Peco, Seep or any commonly use Solenoid point motor to the 16 Turnouts that are needed to build this 10 track fiddle-yard then you'll also need to switch the frogs, add control panel LEDs and of course find enough power to switch all of them reliably (and in pairs to make control easy).



You could of course buy, install and need to wire all these things...  
**For those who use DC Control:** As well as switches and LEDs, add 16x Solenoids + 16x Micro-switches + Power supply + Reliable CDU.



... and if you use DCC Control: Add 4x 4-way Accessory Decoders.



Or you could simply use the new DCCconcepts AD-S8fx decoder...  
**Whether you power your layout with DC or DCC**  
AD-S Series decoders work perfectly, simplify wiring and lower costs

DC or DCC layout, the savings You will make in cash, installation time & complexity are very clear!  
You will still need the 16 solenoids of course, but you will need just ONE AD-S8fx 8-way Accessory decoder to power them all!

Even better - You will need NO added micro-switches because the AD-S8fx has frog polarity & LED switching control on board!

**Save Cash, Save time, Save wiring, Save complexity!**



**DCC** thinking outside the square  
**concepts**

The AD and ADS decoder ranges & all other DCCconcepts products are distributed worldwide by DCCconcepts Pty Ltd. 3/13 Lionel St, Naval Base WA 6165 Australia . Ph. 61 8 9437 2470 Fax. 61 8 9437 2471 . [www.dccconcepts.com](http://www.dccconcepts.com)  
DCCconcepts welcomes Retailer and Distributor enquiries. DCCconcepts products are distributed throughout the United Kingdom by Gaugemaster Controls Ltd., Ford Rd, Arundel \* phone +44 1903 884488 . [www.gaugemaster.com](http://www.gaugemaster.com)