

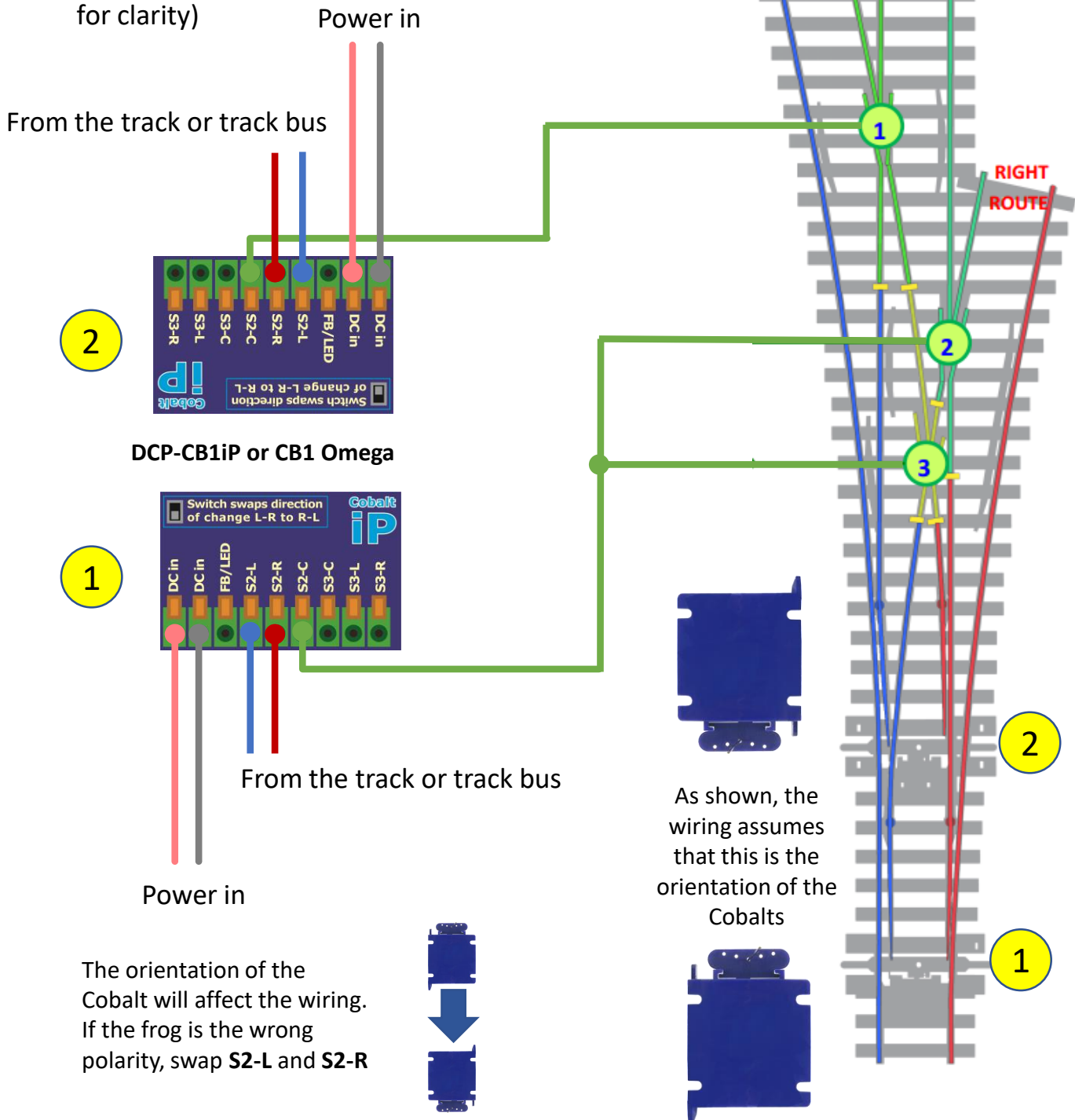


Cobalt Analog, ADfx and a 3-way with LED warnings for illegal routes

Frog Wiring

The same principle applies to AD-4, 6 and 8 accessory decoders

(The AD-2fx is omitted for clarity)



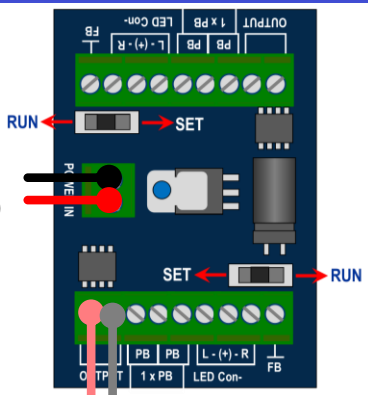
Originally drawn for Ian M



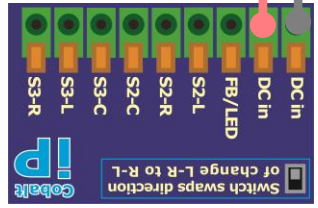
Cobalt Analog, ADfx and a 3-way with LED warnings for illegal routes

ADfx Wiring

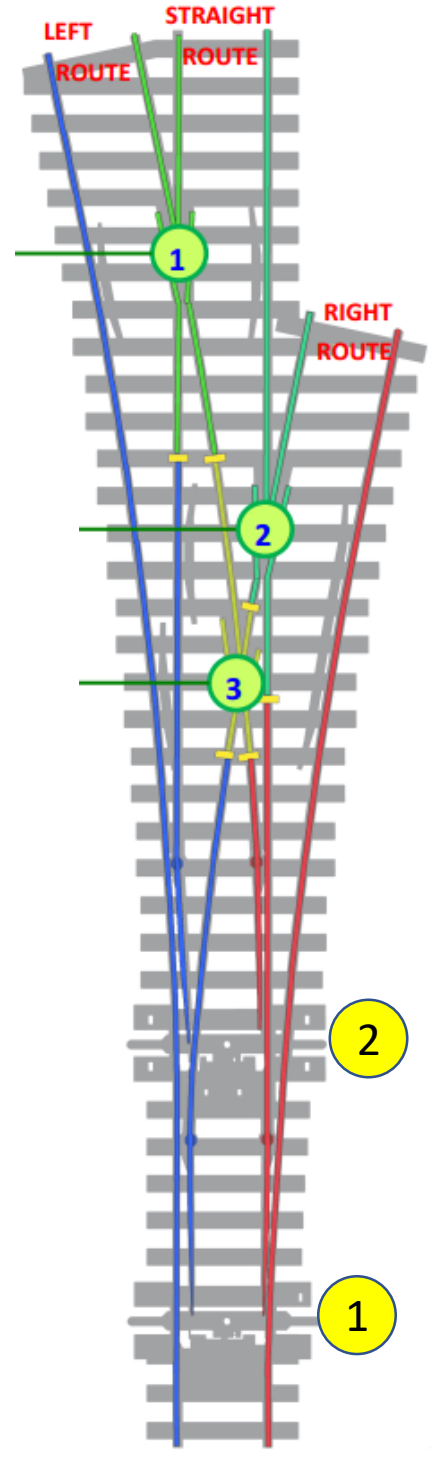
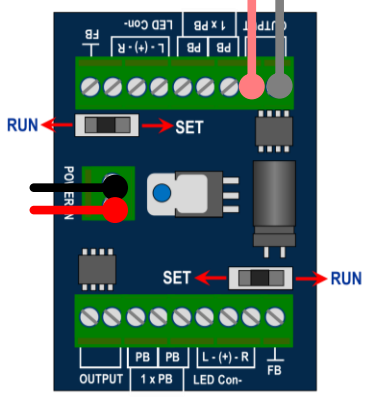
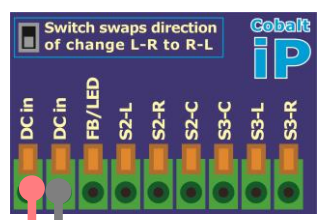
From DCC Power bus
 (Track Bus or Accessory Bus)



2



1



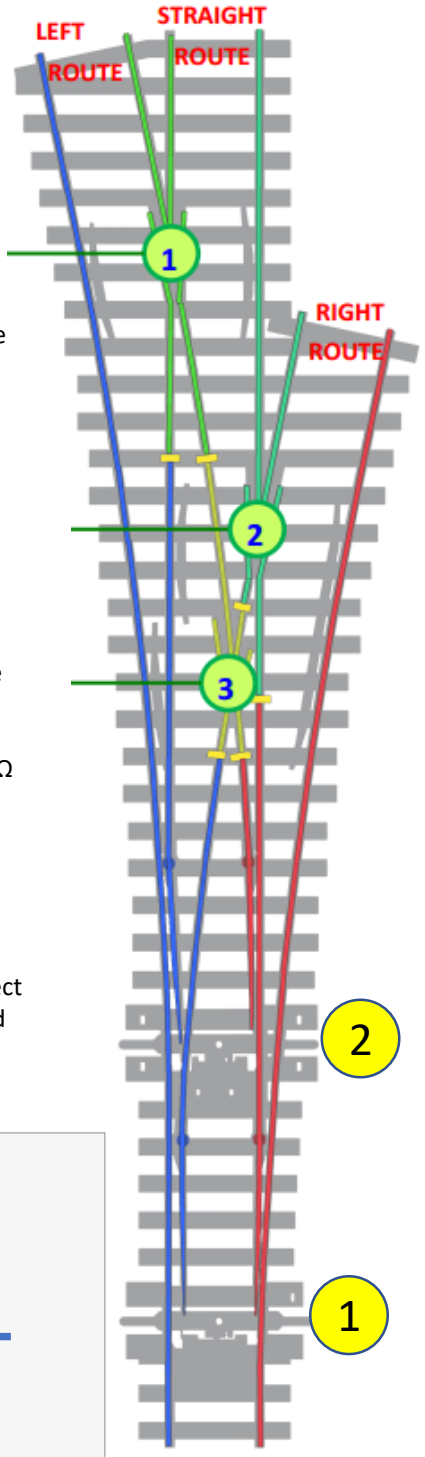
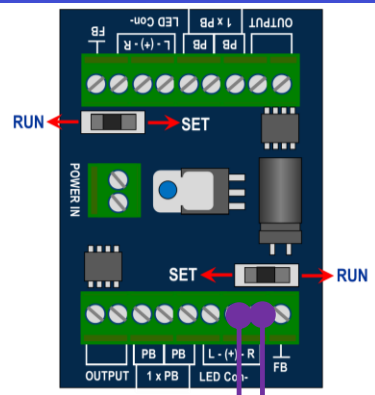
Track Power input to S2-L & S2-R and Frog power on both Cobalts omitted for clarity



Cobalt Analog, ADfx and a 3-way with LED warnings for illegal routes

LED Wiring

All previous wiring omitted for clarity



On both LED outputs, move this wire to the other (unused) connector if the LED does not illuminate when that turnout is set to AHEAD.
 Both AHEAD = Two Greens

Resistor values are indicative – adjust for brightness but never less than 1kΩ

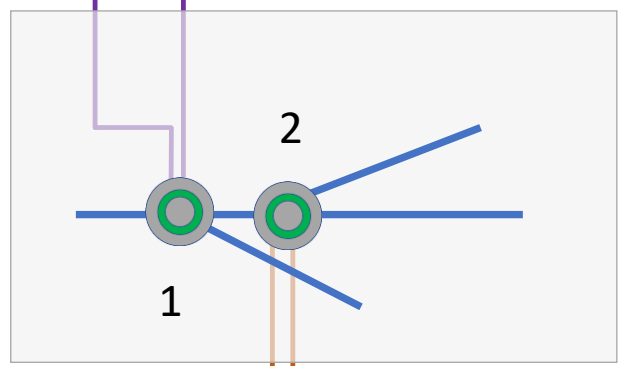
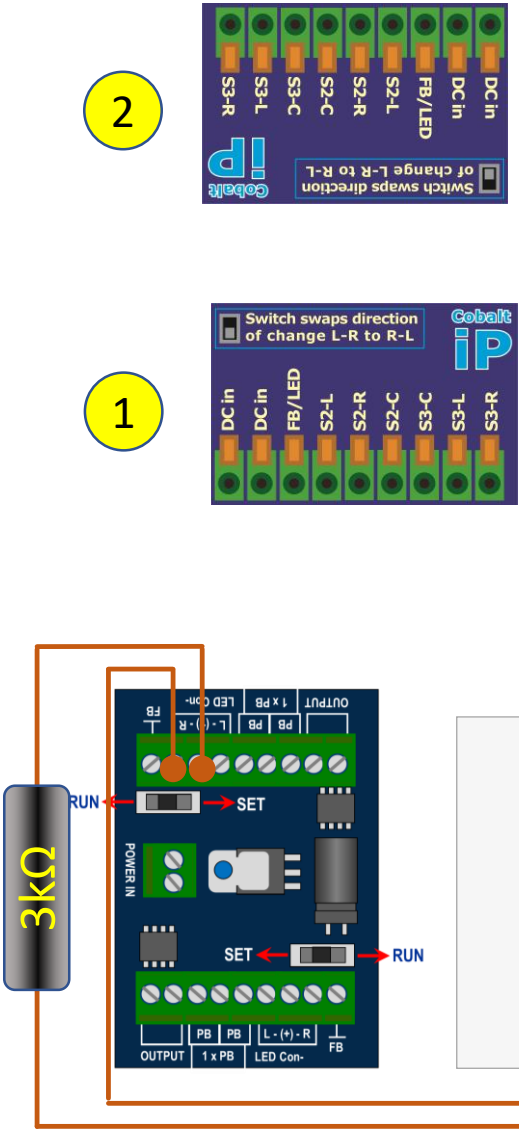
The centre LED output is positive and so must connect to the positive lead of the LED

2

1

2

1



Green LED illuminates if it is OK to that change turnout