



Westinghouse Electro Pneumatic Turnout Motors

From the mid-1930s when LMS started to use these motors, right through to the current day when they can still be found in main line use, the Westinghouse Electro-Pneumatic Motor has been a familiar sight on our railways all over the globe. However, it is rarely seen on model railways!

That's something that we would like to put right! So we developed a affordable, highly detailed fine-scale dummy model in N, OO/HO and O gauge that is simple to install, affordable and will add a rare touch of realism to your layout!

The Prototype...

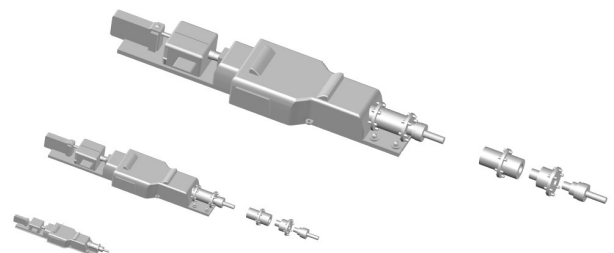
The motors can be found in multiple locations all over the world—there are a few examples below:



↑ Photo - The Signal Engineer (RM web)



↑ Photo - Jeff McGhie (RMweb)



Control using your existing motor - just place these models on your layout next to the turnout as shown in the images above. The dummy motors are sold in black, so they can be easily weathered or painted to add that 'wow' factor!

"Like" our [facebook page](#), where we will post some images soon of how great these can look when they're installed on a layout!



 **Size is important...**



DCP-WEP-O

12x O-Scale Westinghouse Motors



DCP-WEP-OO

12x OO/HO Scale Westinghouse Motors



DCP-WEP-N

12x N-Scale Westinghouse Motors



Did you enjoy the contents - please let us know.

Don't be shy: We invite you to email us and discuss any changes you might like to see and welcome ideas for any "style" changes or additions we could consider to make more interesting reading.

Of course, if you have a specific subject that you would like us to cover, we will listen. Please email us at web@dccconcepts.com and we will see what we can do.

Until then, thank you for sharing your valuable hobby time with us.

A handwritten signature in blue ink, appearing to read 'Richard Johnson'.

Richard Johnson