



## ➡ **Laying track over baseboard joints can be an interesting experience!**

As modellers, we have all used multiple methods for this essential task... ...a few examples of which are below. These methods, whilst functional, are not really cosmetically acceptable - especially in scenic areas!

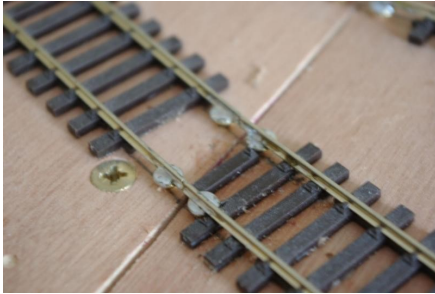


Image from RMweb - soldering to screws/nails.



Image from MRE - soldered slide bolts

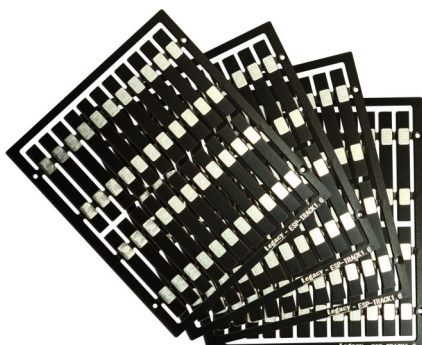
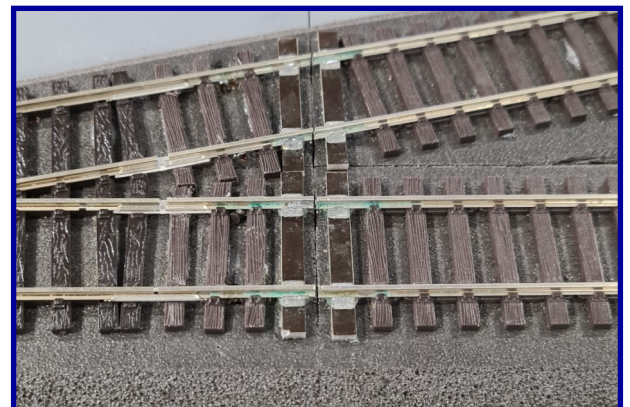
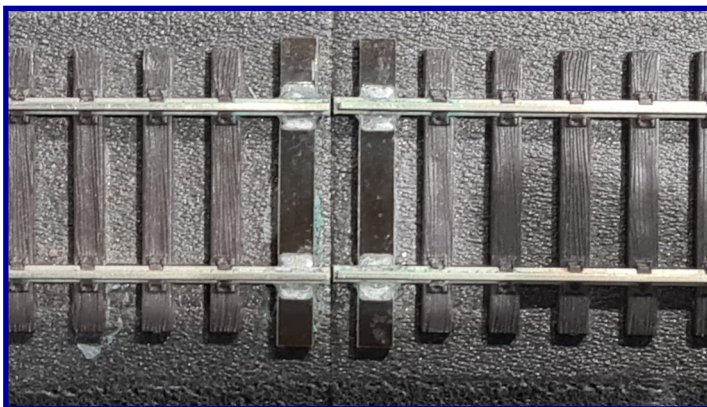


Image from MRC - copper-clad

There are some other solution products available - but whilst they are well engineered, they are also eyewateringly expensive!

## ➡ **Thinking outside the square...**

The easy solution is to simplify the installation of the track over the baseboard joint. Using the principle of the copper-clad system but making the process easier and tidier with pre-cut sleepers and pre-tinned solder pads - all at an affordable price!



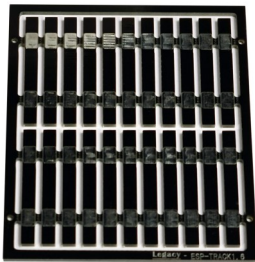
LM-TK1 is a pack of 80 Legacy Models sleepers with pre-tinned pads to accept all OO and HO gauge rail. Using PVA glue to adhere these to your trackbed or baseboard will provide a tough, resilient fastening for your track at every baseboard joint.

Every individual sleeper comes ready-insulated - so no cutting, sawing, Dremel-slicing is ever required!



**Value, practicality and beauty!**

Not only is this solution fantastic value and super-easy to install, but we have even created super-high detail brass chairs to complete the look in the scenic areas of your layout! If you use **bullhead rail** on your layout - just take a look at the **superb** quality of these brass castings!



LM-TK2 is a pack of 20 Legacy Models sleepers with pre-tinned pads to accept all OO and HO gauge rail along with 40 super-high detail bullhead brass chairs for baseboard joints in your scenic areas.



LM-TK3 is a pack of 80 Legacy Models sleepers with pre-tinned pads to accept all OO and HO gauge rail along with 80 super-high detail bullhead brass chairs so you have a selection for your scenic and non-scenic areas.



LM-TK4 is a pack of 100 Legacy Models super-high detail bullhead brass chairs for those modellers who want to use their own sleeper system.



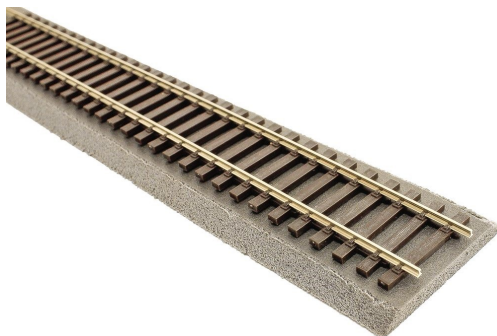


**Combine the Legacy Models sleepers with our pre-cut trackbed!**



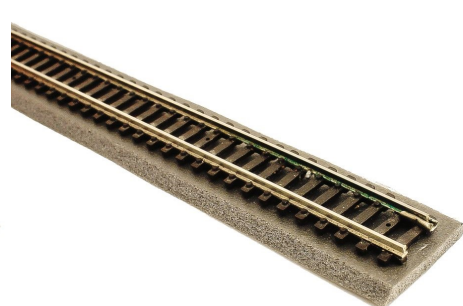
#### DCU-TBH3

100ft (31m) of super-high quality 3mm OO/HO scale trackbed (approx. 9-10" scale depth).



#### DCU-TBH5

100ft (31m) of super-high quality 5mm OO/HO scale trackbed (approx. 15" scale depth).



#### DCU-TBN3

100ft (31m) of super-high quality 3mm N scale trackbed (approx. 18" scale depth).



#### DCU-TBS3

A box of 10 sheets of high-quality, 3mm thick track bed for yard areas etc. 300mm x 600mm per sheet.



#### DCU-TBS5

A box of 6 sheets of high-quality, 5mm thick track bed for yard areas etc. 300mm x 600mm per sheet.

**Scale Ballast - for the perfect finish!**



Combining DCCconcepts Trackbed with Legacy Models sleepers and Legacy ballast gives the complete solution to your tracklaying needs!

This superb correct-scale ballast is available in 4mm and 2mm and is pre-blended with a variety of particle colours and sizes in every jar!



## ➡ DCCconcepts Dealer Network

You can buy DCCconcepts Trackbed and Legacy Ballast direct from us on [www.dccconcepts.com](http://www.dccconcepts.com) - or you can order from any of our dealers. Our dealer network is always growing - find out if there is a dealer near you by clicking the globe below!



## ➡ DCCconcepts Vouchers



The perfect gift for any modeller! We have a **huge** range of electronics, accessories and essentials both on our website and at our shop here in Settle.

If you want to avoid another Flying Scotsman mug or "Book of Trains", why not ask for a DCCconcepts Gift Voucher this year? Available in any multiple of £10, you can order over the phone with us or online by clicking the voucher image above. Worldwide postage of the voucher is free and you'll also receive a beautiful print of a painting by John Harrison from the last days of steam on the Settle-Carlisle line.

**The last day for posting is Friday 17th June - but don't worry... ..if you order after this date and you need your voucher before the big day, just let us know and we can provide it to you via email!**



*If you want to know more - just contact us. We are here 6 days a week and will be happy to take your calls Monday - Saturday 10am and 5pm. You can also find us on Facebook, YouTube and via email to [salesuk@dccconcepts.com](mailto:salesuk@dccconcepts.com) - so wherever you are, we are only a few moments away!*

*Best wishes from all of us here at DCCconcepts*

A handwritten signature in blue ink, appearing to read 'Richard Johnson', with a large, stylized initial 'R'.

**Richard Johnson**

*Did you enjoy the contents—please let us know.*

*Don't be shy: We invite you to email us and discuss any changes you might like to see and welcome ideas for any "style" changes or additions we could consider to make more interesting reading.*

*Of course, if you have a specific subject that you would like us to cover, we will listen. Please email us at [web@dccconcepts.com](mailto:web@dccconcepts.com) and we will see what we can do.*

*Until then, thank you for sharing your valuable hobby time with us.*