



DOWNLOAD
FOR FREE



PRINTED
COPY £1

Show Guide

Show organiser and host:



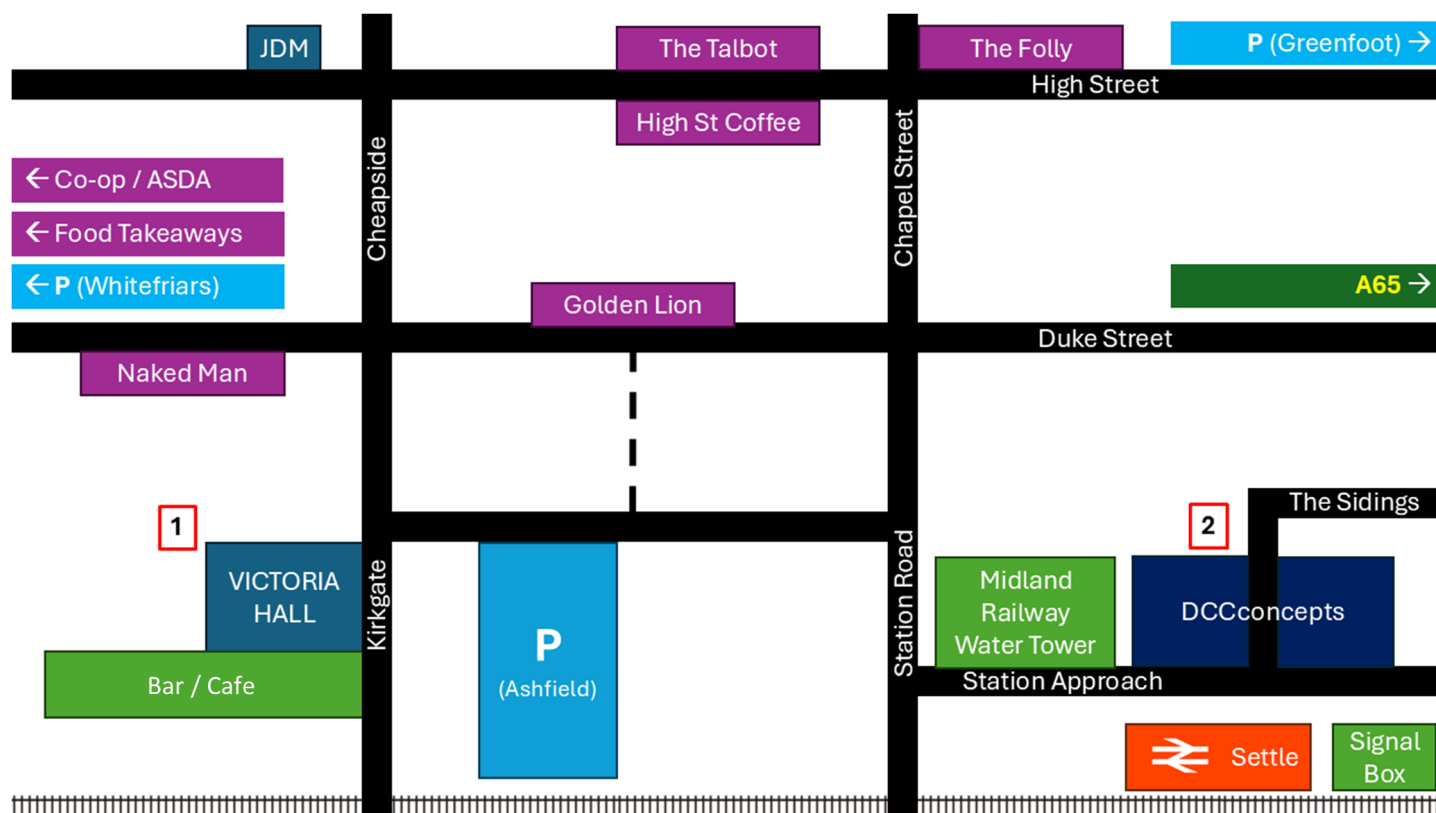
With thanks to:



SATURDAY 19th JULY
OPEN 10am - 5pm



SUNDAY 20th JULY
OPEN 10am - 4pm



Venues and Attractions:

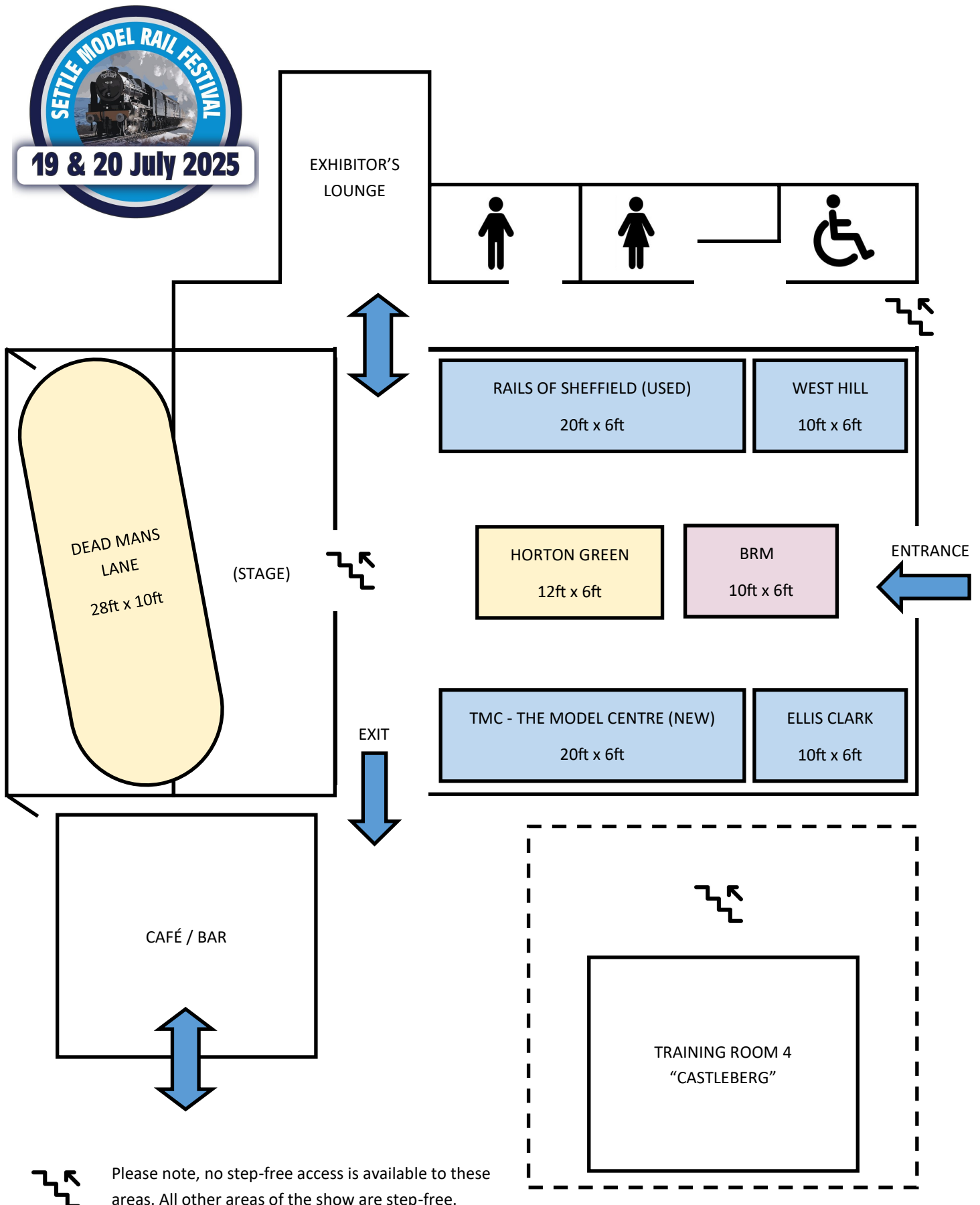
1) Victoria Hall - Model Railway Layouts
Clark Railworks
Rails of Sheffield
TMC The Model Centre
West Hill Wagon Works
Café Bar
Training Room 4

2) DCCconcepts - Model Railway Layouts
Specialist Model Rail Electronics
Shop Layout (Ribblehead)
Demonstration Layouts
Training Rooms 1, 2 and 3
BBQ

	Attractions
	Food / Drink
	Parking
	Sales & Layouts

FREE ENTRY

SETTLE MODEL RAIL FESTIVAL - VICTORIA HALL

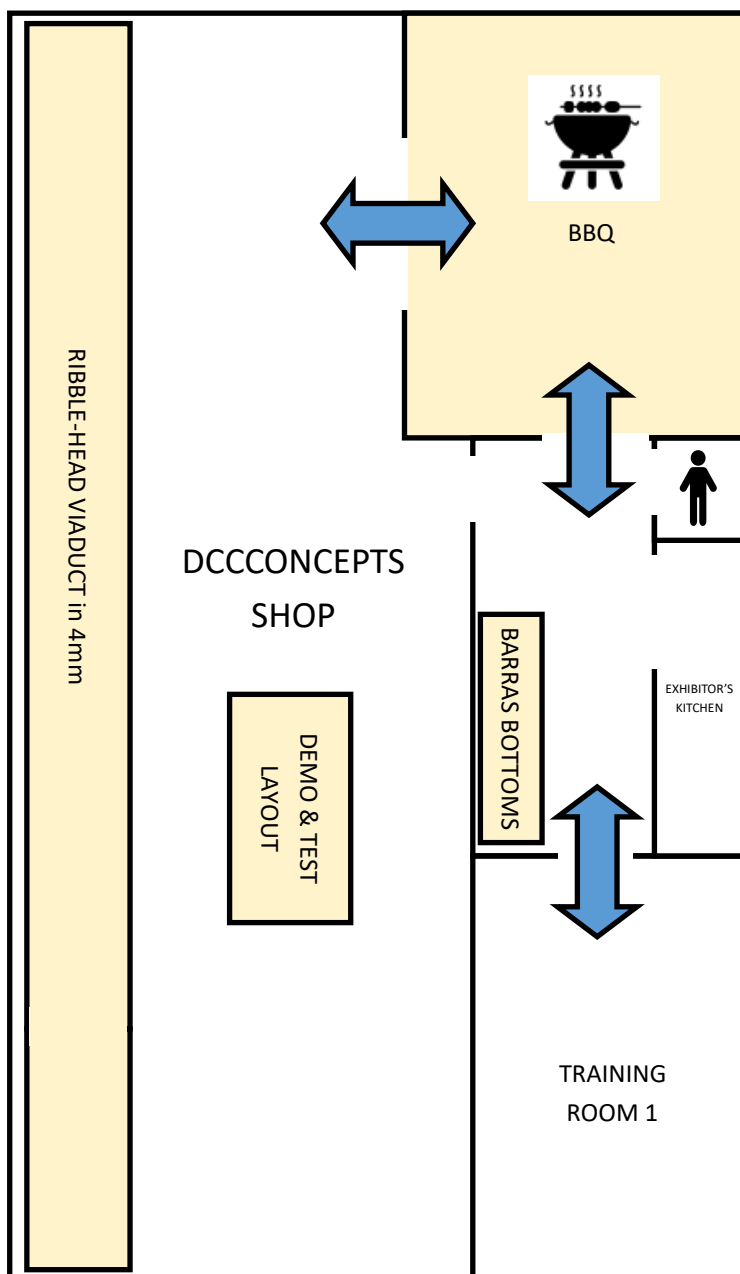


SETTLE MODEL RAIL FESTIVAL - DCCconcepts

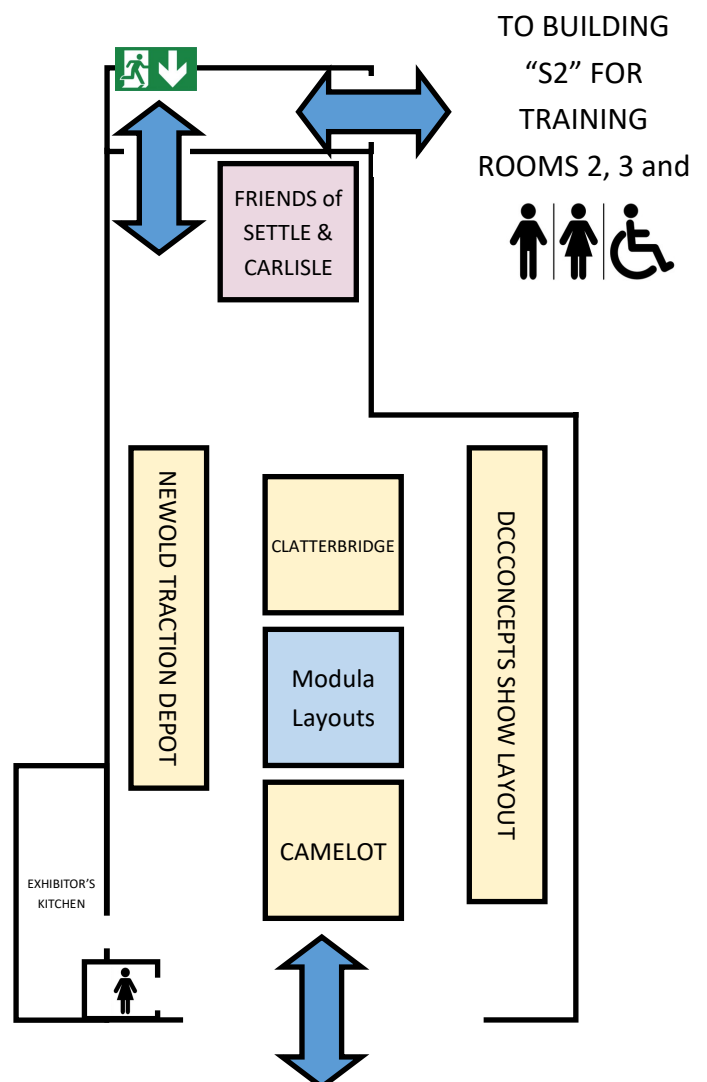


Buildings "S1", "S2" and "S3" are in the DCCconcepts complex on The Sidings, next to Settle Station.

BUILDING "S1"



BUILDING "S3"





Visiting Traders & Organisations (Alphabetical Order)



British Railway Modelling Magazine (World of Railways) - VICTORIA HALL

Meet the team from BRM, find out the latest gossip, pick up a copy of the latest magazine and start your subscription on-stand!



Clark Railworks / Ellis Clark Trains - VICTORIA HALL

See the latest creations from the team in Skipton as they showcase their beautiful models. Chat with the team about their products and find out what's coming soon!



JDM Models - SETTLE TOWN SQUARE

Settle's own model railway emporium with a vast selection of locomotives, rolling stock and accessories. The shop also has a great café on-site!



Modula Layouts - DCCCONEPTS BUILDING "S3"

Just starting out in Model Railways? Want to make a start, but don't know where to begin? Steve from Modula Layouts can help with baseboard and layout building options!



Rails of Sheffield - VICTORIA HALL

Meet the team from Rails, South Yorkshire, who will have a huge selection of quality used locos, rolling stock and accessories for your layout! Something for every budget!



TMC The Model Centre - VICTORIA HALL

The guys from TMC, Beck Hole, North Yorkshire, have a large selection of brand new locos and rolling stock, including weathered and graffitied examples!



West Hill Wagon Works - VICTORIA HALL

West Hill Wagon Works have hundreds of 3D-printed detailing parts and magnetic couplings for model railways in N, TT, OO and O gauge!



Visiting and Permanent Layouts

Barras Bottoms (2mm)

Location : DCCCONCEPTS BUILDING "S1"



Barras Bottoms by Howard Lorriman is a fictional layout based on the old GNR system in the West Riding around 1960-70.

Situated between Tingley and Batley it is assumed the line was intended to run through to Low Moor as double track but construction was curtailed to single track and terminated at Barras Bottoms near to what was the real Woodkirk station. The line remained open until the late 1960s to serve the quarry and rhubarb industry in that area.

The single baseboard is 1500mm x 400mm from WhiteRose. Track is mainly Finetrax from the 2mm Association although the cross over was built 25 years ago using PCB sleepers. In fact most items on the layout come from an earlier attempt at a 2mmFS layout started nearly 30 years ago! Stock is mostly kits or converted N gauge and control is by NCE PowerCab, Cobalt iP Digital point motors, DG couplings and PK electromagnets.



Visiting and Permanent Layouts

Camelot (TT:120 / 2.5mm)

Location : DCCCONCEPTS BUILDING “S3”



Camelot by Christopher Hobbs (Peachy TT120 on YouTube) was designed to show off what can be achieved in a very small space (4' x 3') with the “new” true scale system from Hornby.

The centre piece of Camelot is the ROCO turntable with an eight lane round house, re-finished in “Scalescenes” printed paper to make it look less Continental, which is surrounded by two mainline running loops, a “working” loop with goods yard and separate coal drop and a raised level for rolling stock storage. Behind the backscene is a simple but useful stock loading fiddle yard.

The running stock on Camelot is Post War Era 4 & 5, BR, with locos that have had lighting and power-banks retro fitted as these are not currently available within the Hornby range.

Heljan’s brand new running samples of the Class 55 Deltic and 122 bubble car (first shown in DC mode on Camelot at Key Model World Live) will be running on DCC for the first time in public, both with appropriate stock.



Visiting and Permanent Layouts

Clatterbridge (4mm)

Location : DCCONCEPTS BUILDING "S3"



Clatterbridge by Ben Knipe is set vaguely in the North of England and comprises a privately owned light maintenance yard, which is used by British Rail and private industrial railways for the servicing of their rolling stock such as wagons and industrial shunters.

Nestled between brick buildings belonging to the yard and adjacent industries, the compact network of sidings is always busy with incomings and outgoings of rolling stock dropped off by mainline locos and local trip shunters, to pass through the site's workshops before returning into service.

Ben's intention was to create an authentic looking and highly detailed micro-layout, to show off my selection of kit built, modified and detailed rolling stock. Most buildings are scratch-built, and carefully considered in size and location to add depth and variety, without feeling cluttered. Buildings, track, and rolling stock are carefully weathered, further adding to the industrial atmosphere. Because of its simple wiring, this layout can be operated as either DC analogue (one loco in steam) or as DCC with sound-fitted locos.



Visiting and Permanent Layouts

Deadmans Lane (4mm)

Location : VICTORIA HALL - MAIN STAGE



Deadmans Lane by Mick Bryan is a modern-image layout focussed on the Network Rail facilities in Derby - the former British Rail Research and Technical Centre (RTC), now mostly occupied by Loram, who maintain the Infrastructure Monitoring (IM) test fleet on behalf of Network Rail.

One of the original aims behind 'Deadmans Lane' was not to be just another DCC-controlled diesel depot as the RTC site welcomes a large variety of locomotives and liveries, as well as the unique test vehicle fleet. There are regular visitors including the likes of Great Western 57/6s and Direct Rail Services 37s for heavy overhaul work to add to the variety. Some licence has been taken with the passing trains, as these have been modelled upon those that run nearby in the Stenson / Trent Junction / Derby environs.

Mick has steadily built up a collection of test coaches to represent such mystical vehicles as TRU, UTU, TIC, EMV, RSC, SGT and PLPR. Much of the enjoyment of building the fleet has been in the research of these rare vehicles!



Visiting and Permanent Layouts

Horton Green (4mm)

Location : VICTORIA HALL - MAIN FLOOR



Horton Green Model Railway is a 'traditional chocolate box' branch line terminus somewhere in the south of Devon. It features a small terminus station with a run round loop that can accommodate 3 X MKI / Collett carriages. The loco release will happily fit a substantial tender engine loco (such as a Standard Class 4MT or a GWR Manor/Hall Class).

The station has loco facilities in the shape of a small engine shed (housing the station pilot engine), coal and water tower. At the far end of these facilities, a goods shed, cattle dock, and local timber merchant business complete the goods yard scene. A separate siding to the rear of the platform provides additional storage for wagons and coaches. A local coal and coke merchant has a premises to the front of the engine shed facilities.

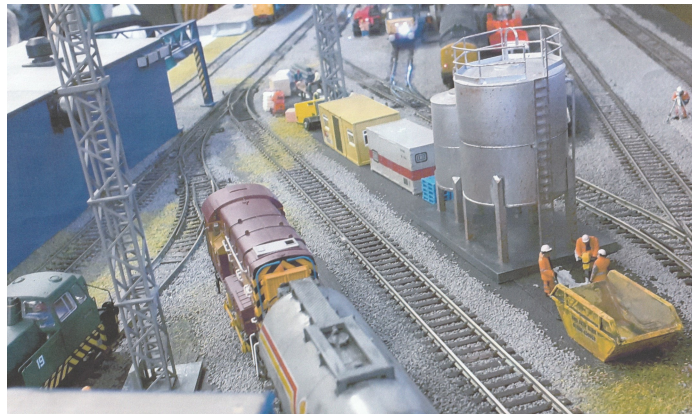
The layout features the ubiquitous Ratio/Peco kits which are painted and weathered using artist oil paints, and weathering powders from the Humbrol range. The main station buildings and signal box are from the Bachmann Scenecraft range, and have been repainted to represent them in GWR colours.



Visiting and Permanent Layouts

Newold Traction Depot (4mm)

Location : DCCCONCEPTS BUILDING "S3"



Newold Traction Depot in 4mm is a layout by David Martin. It can be operated with DC or DCC sound and features modern-image, steam or can be more family-oriented with "Thomas and Friends" engines.

Ribblehead Viaduct (4mm)

Location : DCCCONCEPTS BUILDING "S1"



Our shop layout will be running throughout the show weekend, with a huge variety of locomotives and rolling stock on display. Visit the shop to watch the trains go over the huge 4mm scale model of Ribblehead Viaduct. Landscaping is now underway on this massive project so you see this "in progress"!



Other Attractions



Settle Station & Signal Box

Built in 1891 and closed in 1984, this signal box is a Midland Railway type "2a" design which controlled Settle Station and the associated sidings.

The box should be open for viewing and operational demonstrations on Saturday 19th July.



Craft Fair

The Friends of the Settle & Carlisle Line will be hosting a Craft Fair at Settle Station on Saturday 19th and Sunday 20th July.



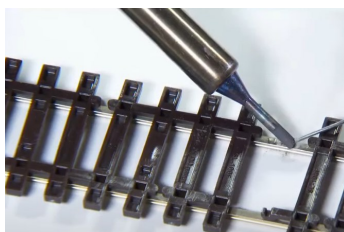
The Folly

The Folly in Settle Town Centre will be open on Saturday 19th July for you to explore the Museum of North Craven Life. Admission to The Folly is FREE of charge, but donations are always appreciated.



Live Music

Our friends at Settle Victoria Hall will be laying on a fantastic spread at their café and bar, as well as arranging live music for the weekend in the gardens! A fantastic place to relax and enjoy a beverage!



Modelling Courses

Four dedicated training rooms will be used to deliver courses in Soldering, Basic Weathering, Advanced Weathering, Controlling Point Motors and Using SuperPanel. Courses should be pre-booked, but some spaces may be available on the day.



Tea Rooms, Coffee Shops, Cafés and Pubs

Settle has a huge range of refreshment options, whether your preference be for a traditional pub, an up-market tea room or a quality café - you'll find something to suit all tastes around the market square in the town!

SAVE THE DATE!



THE NATIONAL FESTIVAL OF RAILWAY MODELLING



Be notified with the latest event information
and railway modelling news by signing up
to our email: www.brmm.ag/nec25flyer

60+
LAYOUTS
130+
EXHIBITORS
& CLUBS AND
SOCIETIES